



# SUMMATIVE I MILESTONE I

Kara burt - AD100 DCF2402-OL1

# Auahitūroa

or my god I have chosen Auahituroa. The personification of Comets and Origin of Fire. Auahituroa was told by his father, Tama-nui-te-rā to deliver something good for humanity. Auahituroa brought a gift in the flickering form of fire.

Auahituroa would end up marrying Mahuika goddess of fire. Together the two had five kids, each named for the five fingers on the human hand.



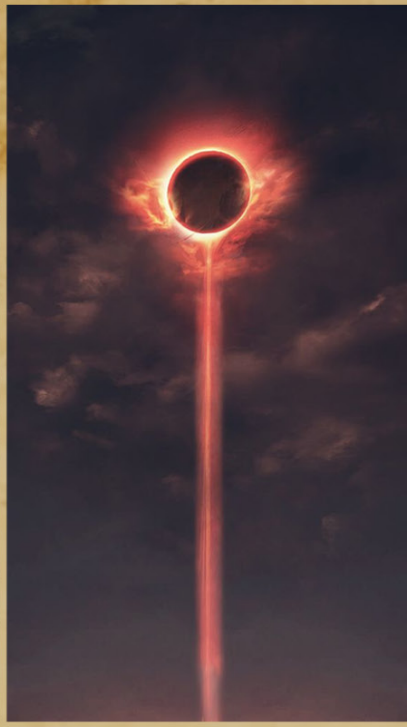
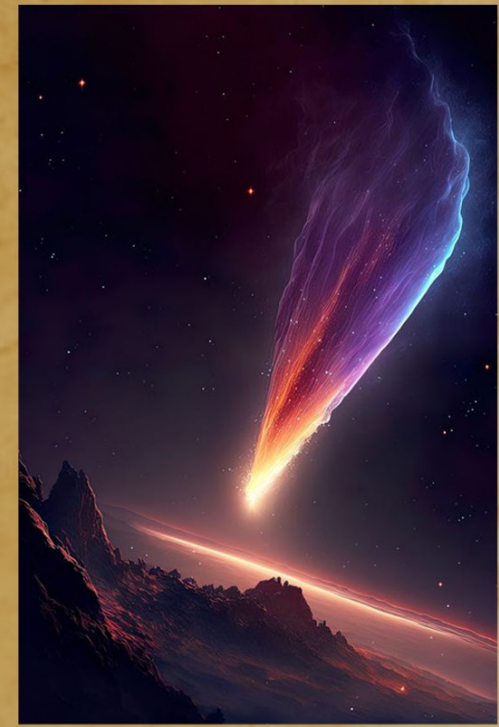
# Auahitūroa

Although there is little on Auahitūroa from what there is, I personally choose to interpret the god as a benevolent being. A god who brought the warmth of flame to humanity and a devoted husband if the five kids says anything. However as a god of comets and bringer of fire I believe that like many Māori gods Auahitūroa may also have a temper alongside his kind traits.

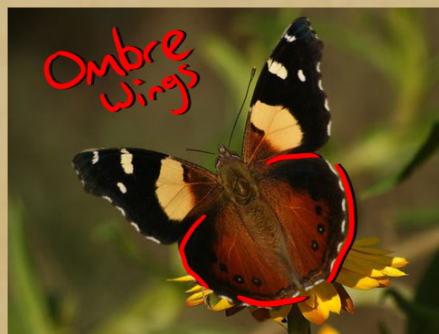
I have chosen this god because I wanted to try something new as most of my characters are storm based, with flame being a secondary ability. Alongside this I like the concept of space/divinity and I've been playing dark souls for the first time, the title "origin of fire" reminded me of the game.



# Origin of Fire



# Endemic Life



# Fantastical Life



Massive Flowy Wings

JET WINGS

Wings.  
Multiple of them.

Double Jaw

Star Wings

Beak

Buff Wing/Arms

Neck Fluff

Large Eyes

Wyvern

# Concepts



# Valnuitūroa

I only saw the creature for a second. One awfully long second. A simmering beast of flame with great big wings! It felt as if I was staring down hidden god.

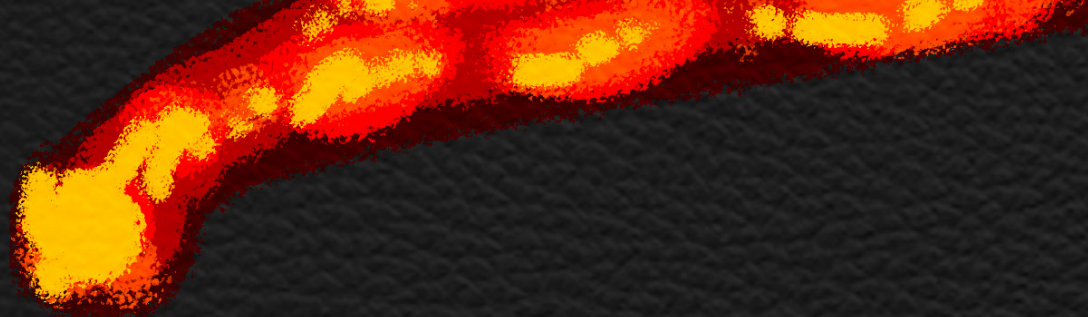
I believe it looked something like the sketches on the right. Oh how those wings are marveleous! The flames made it reminescent of a comet soaring through the stars.

In some aspects it looked like a moth, glowing like embers in the night.

Such marvelous patterns too, like a brillaint night sky. I could have sworn it had a second jaw, how unique and outlandish.







*If lost please return to Kara*

